

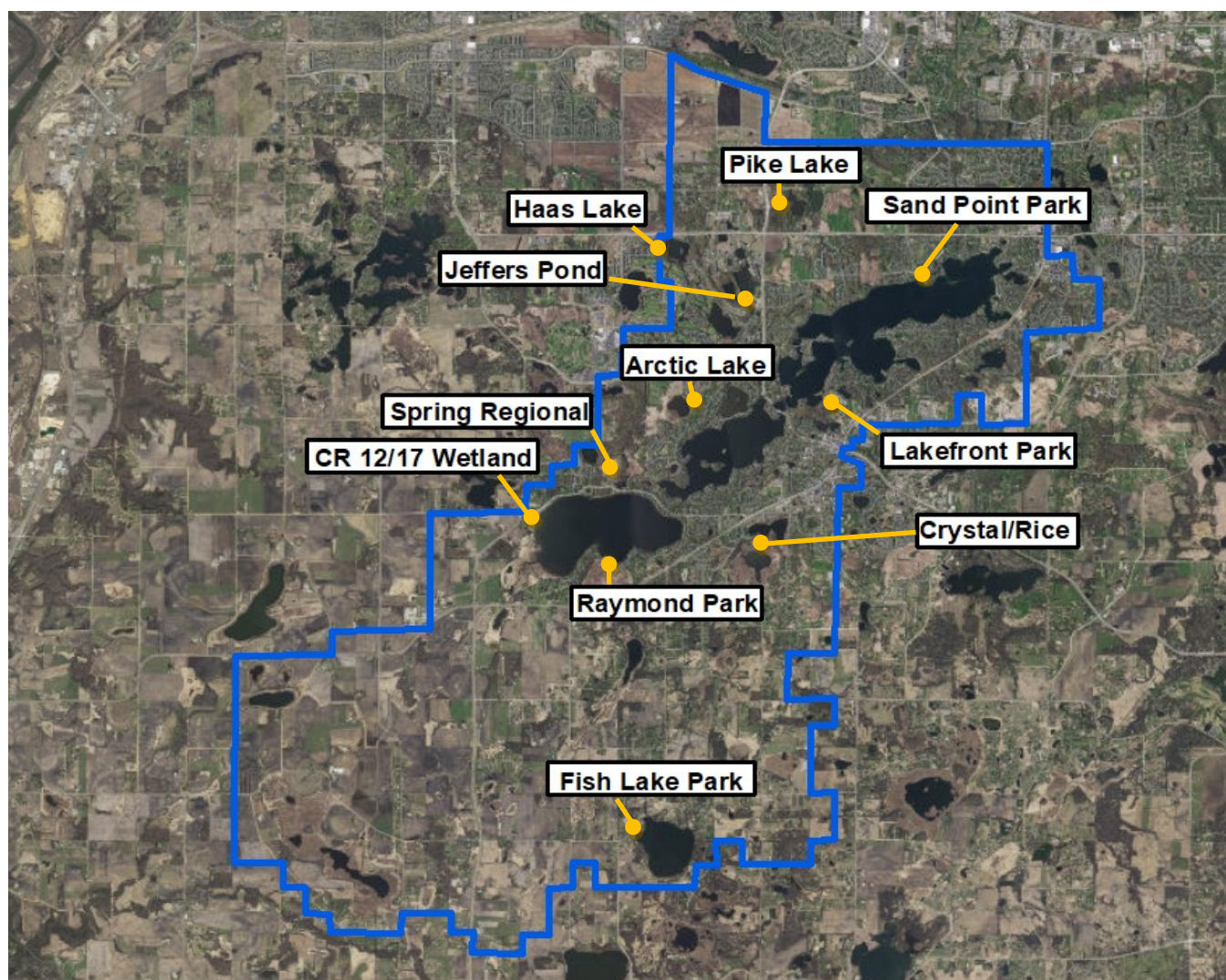


HIKE THE WATERSHED

TAKE 11 HIKES TO EXPERIENCE WHAT THE WATERSHED HAS TO OFFER

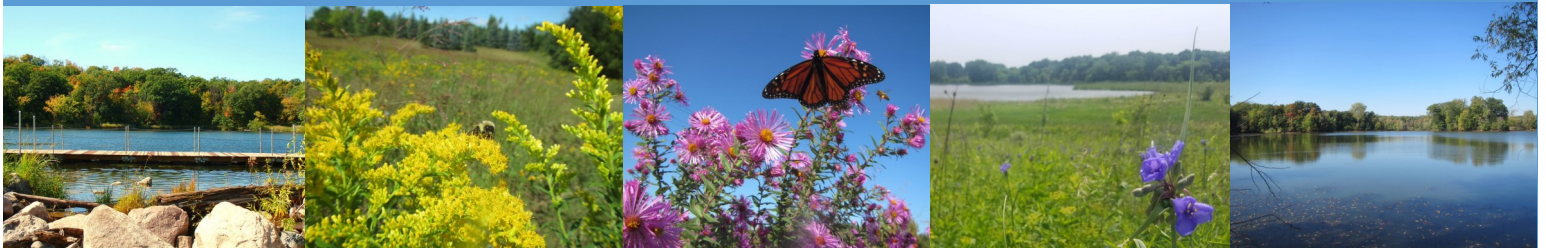
Since 1970, the Prior Lake-Spring Lake Watershed District has been working to maintain, preserve and restore the watershed so it can be enjoyed by people and wildlife alike.

**Visit your favorite parks and discover new places!
Get ready to explore your backyard and see if you
can visit them all!**



HIKE THE WATERSHED

-  **Arctic Lake:** Walk the new trail along the edge of this small lake. Restoration projects since 2013 have boosted ecosystem health and increased aesthetic quality. (**Glynwater Trl NW**)
-  **Crystal & Rice Lakes:** Bike trails, a fishing dock, a nature preserve and two lakes — oh my! Plus, a picnic shelter and a playground tucked along the bike path. (**4217 Village Lk Dr, 3439 Skinner St**)
-  **Fish Lake Park:** Check out the restored prairie and raingarden at Spring Lake Town Hall set on the shores of Fish Lake. (**20381 Fairlawn Ave**)
-  **Haas Lake:** Take a walk on the boardwalk to look for lily pads and herons on this beautiful small lake. (**3120 Wilds Ridge NW**)
-  **Jeffers Pond:** The Prior Lake outlet channel flows through here on its way to the Minnesota River. Enjoy the waterfall, wildlife and many trails that wind through a beautiful maple forest. (**Jeffers Pkwy NW**)
-  **Lakefront Park:** Spend the day visiting Watzl's Beach, walking through the woods and fishing at Little Prior. (**5000 Kop Pkwy**)
-  **Pike Lake:** Hike the trails at this hidden park to see eagles, native plants and possibly a beaver! (**4262 140th St NE**)
-  **Raymond Park:** Meander through native grasses and forbs on the trail through the restored oak savanna or hang out on the long fishing pier. (**2350 Raymond Ave**)
-  **Sand Point Park:** Spend time at the beach on Lower Prior or enjoy a game of volleyball while looking at the restored prairie. (**14349 Crest Ave SE**)
-  **Spring Lake Regional Park:** Bike or walk the several miles of trails through maple-basswood forest which connect to Arctic Lake. Cross County Road 12 to see the shoreline restoration project on Spring Lake. (**15851 Howard Lk Rd**)
-  **12/17 Wetland:** Walk the trails that wind around the three restored wetlands and enjoy the native grasses and flowers while keeping an eye out for abundant wildlife. (**Sunset Ave & CR 12**)



**PRIOR LAKE-SPRING LAKE
WATERSHED DISTRICT**