



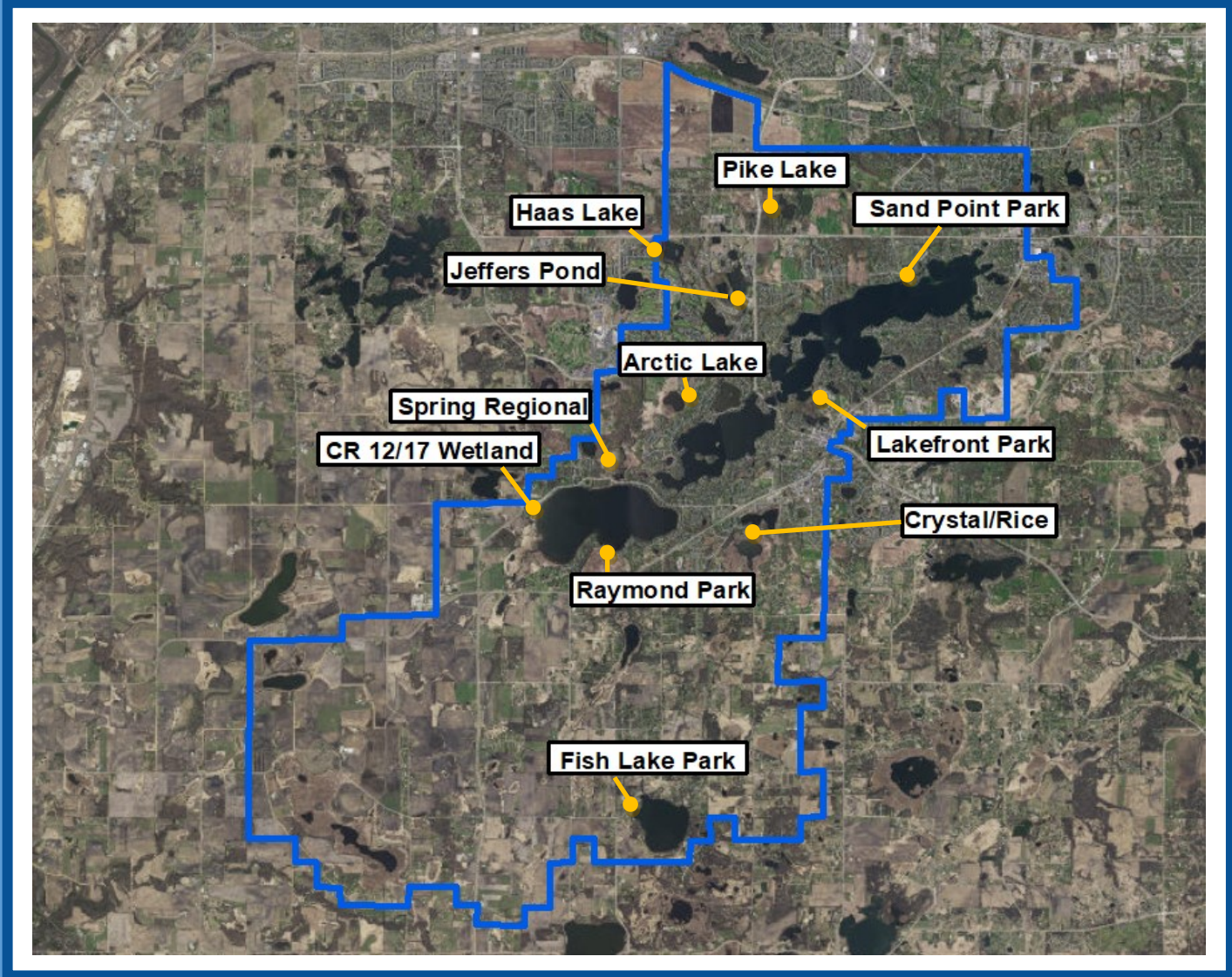
HIKE THE WATERSHED

CELEBRATE THE DISTRICT'S 50TH ANNIVERSARY

Since 1970, the Prior Lake-Spring Lake Watershed District has been working to maintain, preserve and restore the watershed so it can be enjoyed by people and wildlife alike.

Visit your favorite parks and discover new places! Get ready to explore your backyard and see if you can visit them all!

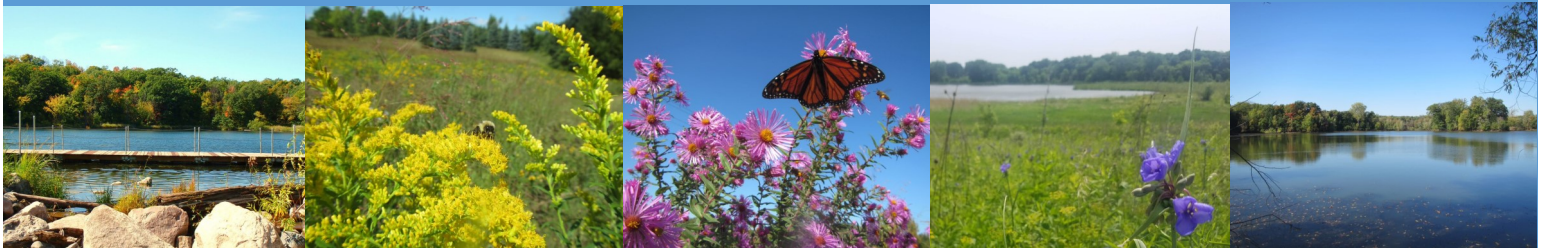
Visit 6 sites to earn a cool Hike the Watershed sticker or visit all 11 sites to score some extra swag. Email the parks you visited along with a photo from your adventures to kkeller-miller@plslwd.org for your prize.



HIKE THE WATERSHED

- Arctic Lake:** Walk the new trail along the edge of this small lake. Restoration projects since 2013 have boosted ecosystem health and increased aesthetic quality. **(Glynwater Trl NW)**
- Crystal & Rice Lakes:** Bike trails, a fishing dock, a nature preserve and two lakes — oh my! Plus, a picnic shelter and a playground tucked along the bike path. **(4217 Village Lk Dr, 3439 Skinner St)**
- Fish Lake Park:** Check out the restored prairie and raingarden at Spring Lake Town Hall set on the shores of Fish Lake. **(20381 Fairlawn Ave)**
- Haas Lake:** Take a walk on the boardwalk to look for lily pads and herons on this beautiful small lake. **(3120 Wilds Ridge NW)**
- Jeffers Pond:** The Prior Lake outlet channel flows through here on its way to the Minnesota River. Enjoy the waterfall, wildlife and many trails that wind through a beautiful maple forest. **(Jeffers Pkwy NW)**
- Lakefront Park:** Spend the day visiting Watzl's Beach, walking through the woods and fishing at Little Prior. **(5000 Kop Pkwy)**
- Pike Lake:** Hike the trails at this hidden park to see eagles, native plants and possibly a beaver! **(4262 140th St NE)**
- Raymond Park:** Meander through native grasses and forbs on the trail through the restored oak savanna or hang out on the long fishing pier. **(2350 Raymond Ave)**
- Sand Point Park:** Spend time at the beach on Lower Prior or enjoy a game of volleyball while looking at the restored prairie. **(14349 Crest Ave SE)**
- Spring Lake Regional Park:** Bike or walk the several miles of trails through maple-basswood forest which connect to Arctic Lake. Cross County Road 12 to see the shoreline restoration project on Spring Lake. **(15851 Howard Lk Rd)**
- 12/17 Wetland:** Walk the trails that wind around the three restored wetlands and enjoy the native grasses and flowers while keeping an eye out for abundant wildlife. **(Sunset Ave & CR 12)**

Keep track of the parks you visit & earn a Hike the Watershed sticker after you visit 6 parks or visit all 11 sites to score some extra swag.



**PRIOR LAKE
SPRING LAKE
WATERSHED DISTRICT**

Help us celebrate our 50th! Join us for events & activities to celebrate our 50th Anniversary throughout 2020 & 2021. Find more information on our website at www.plslwd.org or call (952) 447-4166.