



Prior Lake-Spring Lake Watershed District Lakes (Google Earth Map)

Aquatic Plant Survey Summary for Six Lakes in the Prior Lake-Spring Lake Watershed District 2016

Lakes: Arctic, Buck, Cates, Crystal, Jeffers, and Swamp

Prepared for:
**Prior Lake-Spring Lake
Watershed District**



Prepared by:
**Steve McComas and
Jo Stuckert
Blue Water Science
St. Paul, MN 55116**

March 2017

Aquatic Plant Survey Summary for Six Lakes in the Prior Lake-Spring Lake Watershed District 2016

Summary

Over the growing season of 2016, aquatic plant point-intercept summer surveys were conducted for 6 Prior Lake-Spring Lake Watershed District lakes. Summer aquatic plant surveys for all 6 lakes were conducted in August and September, 2016. Coontail was the dominant plant species in the 5 lakes with plants (Table S1). The non-native plant, Eurasian watermilfoil was present in 2 lakes. Several lakes had heavy aquatic plant growth and good water quality (Figure S1).

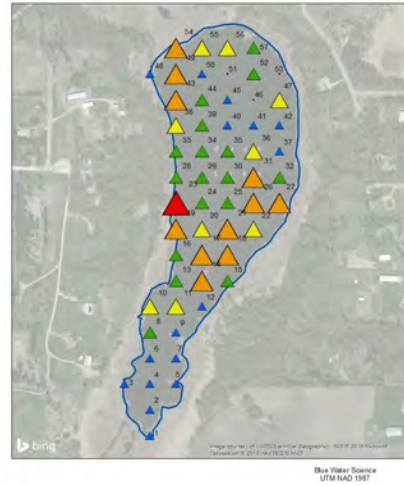
Table S1. The percent occurrence of summer aquatic plants for 6 Prior Lake-Spring Lake Watershed District lakes in 2016. Percent occurrence is calculated based on the number of times a plant species occurs at a sampling station divided into the total number of stations for the survey.

	Arctic Aug 29 (39 sites)	Buck Aug 31 (57 sites)	Cates Aug 29 (54 sites)	Crystal Sept 1 (55 sites)	Jeffers Aug 29 (56 sites)	Swamp Aug 31 (71 sites)
Cattails (<i>Typha sp</i>)			4%			
Duckweed (<i>Lemna sp</i>)		14%		7%		
American lotus (<i>Nelumbo lutea</i>)			24%			
White waterlilies (<i>Nymphaea sp</i>)			43%	60%		61%
Coontail (<i>Ceratophyllum demersum</i>)		95%	87%	80%	95%	85%
Elodea (<i>Elodea canadensis</i>)		46%	17%		36%	
Northern watermilfoil (<i>Myriophyllum sibiricum</i>)				2%	39%	
Eurasian watermilfoil (<i>M. spicatum</i>)			7%		86%	
Cabbage (<i>Potamogeton amplifolius</i>)			2%			
Curlyleaf pondweed (<i>Potamogeton crispus</i>)				2%		
Floatingleaf pondweed (<i>P. natans</i>)					2%	
Flatstem pondweed (<i>P. zosteriformis</i>)		49%	2%	18%	13%	8%
Sago pondweed (<i>Stuckenia pectinata</i>)		19%		2%	2%	37%
Bladderwort (<i>Utricularia sp</i>)		12%				
Filamentous algae					7%	
Lake size (ac)	33	23	30	30	39	53
Aquatic Plant Coverage (%)	0%	95%	93%	82%	100%	96%
Total submerged species	0	5	5	5	7	3

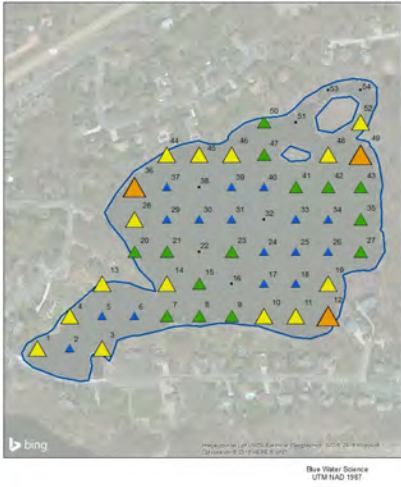
Arctic Lake Species Richness
August 29, 2016



Buck Lake Species Richness
August 31, 2016



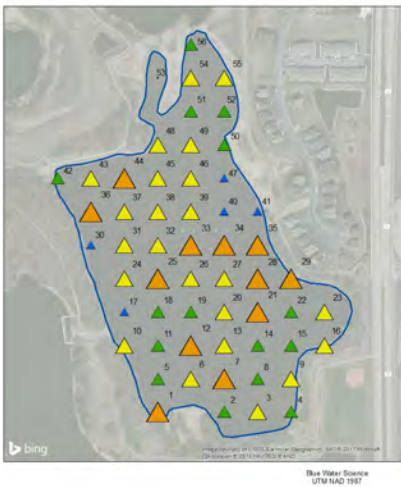
Cate's Lake Species Richness
August 29, 2016



Crystal Lake Species Richness
September 1, 2016



Jeffers Lake Species Richness



Swamp Lake Species Richness
August 31, 2016



Figure S1. Species richness (or number of plant species) by site and plant distribution for 2016 summer plant surveys for 6 selected lakes in the Prior Lake-Spring Lake Watershed District.