



An Iron-Enhanced Sand Filter will be installed in the swale bottom in the central part of the park. The filter will treat incoming stormwater before it reaches the lake.

A

IRON-ENHANCED SAND FILTER



B

WETLAND OUTLET STRUCTURE

The wetland enhancement and outlet structure will hold back water in the wetland and will slowly release water into the Iron-Enhanced Sand Filter for further treatment.



Turf areas adjacent to the wetland and open water will be re-seeded with a native grass and perennial mix. This will reduce erosion and decrease pollutant discharge into the water treatment system.

C

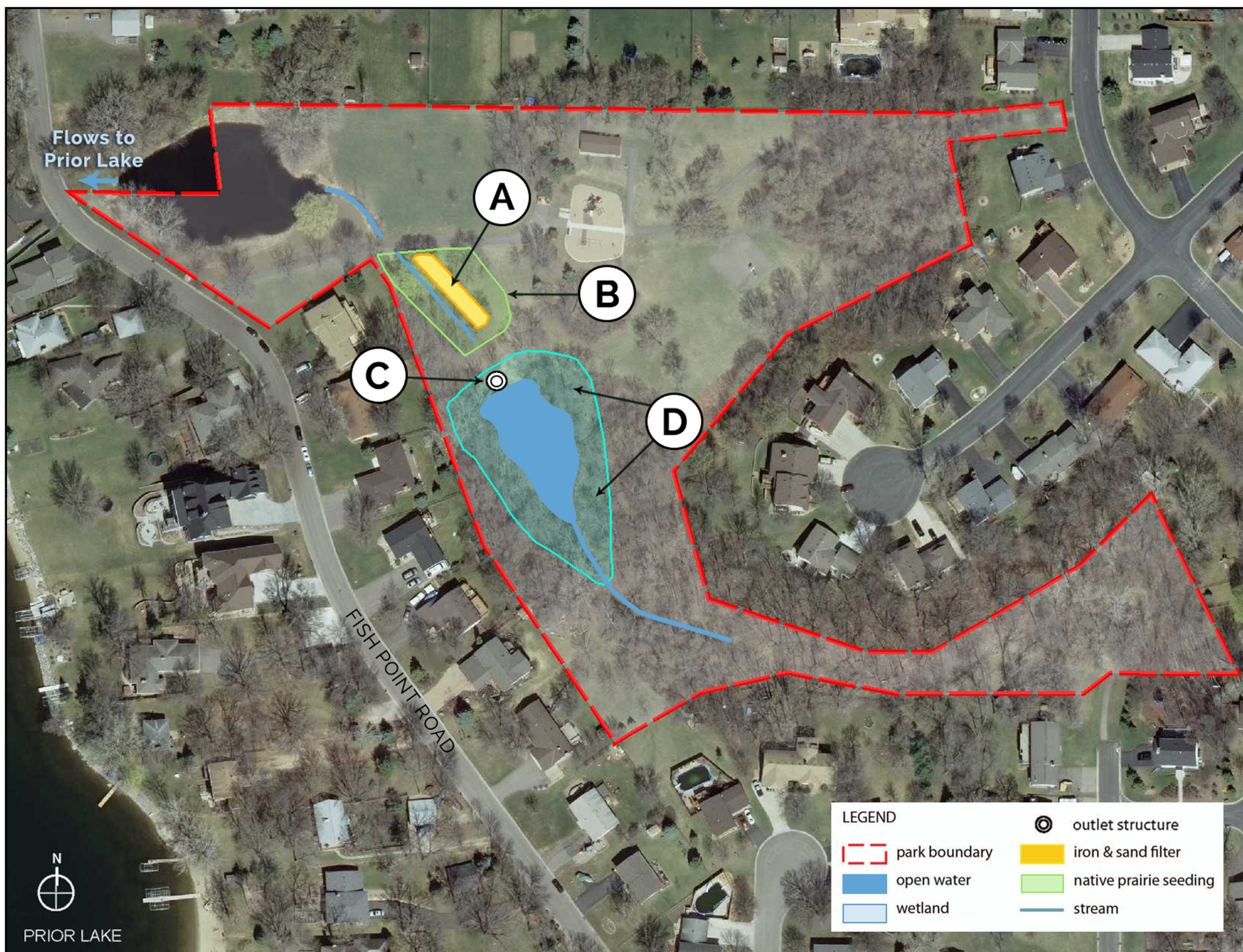
NATIVE PRAIRIE PLANTING



D

WETLAND ENHANCEMENT + NATIVE PLANTING

Open water will be a nearly continuous presence in the central portion of the park in order to more effectively treat stormwater runoff via detention and subsequent filtration through the Iron-Enhanced Sand Filter.



If you have any questions, please contact Maggie @ 952-447-9808

Fish Point Park

WATER RESOURCE IMPROVEMENTS

