
Prior Lake-Spring Lake Watershed District

(Who We Are and What We Do)



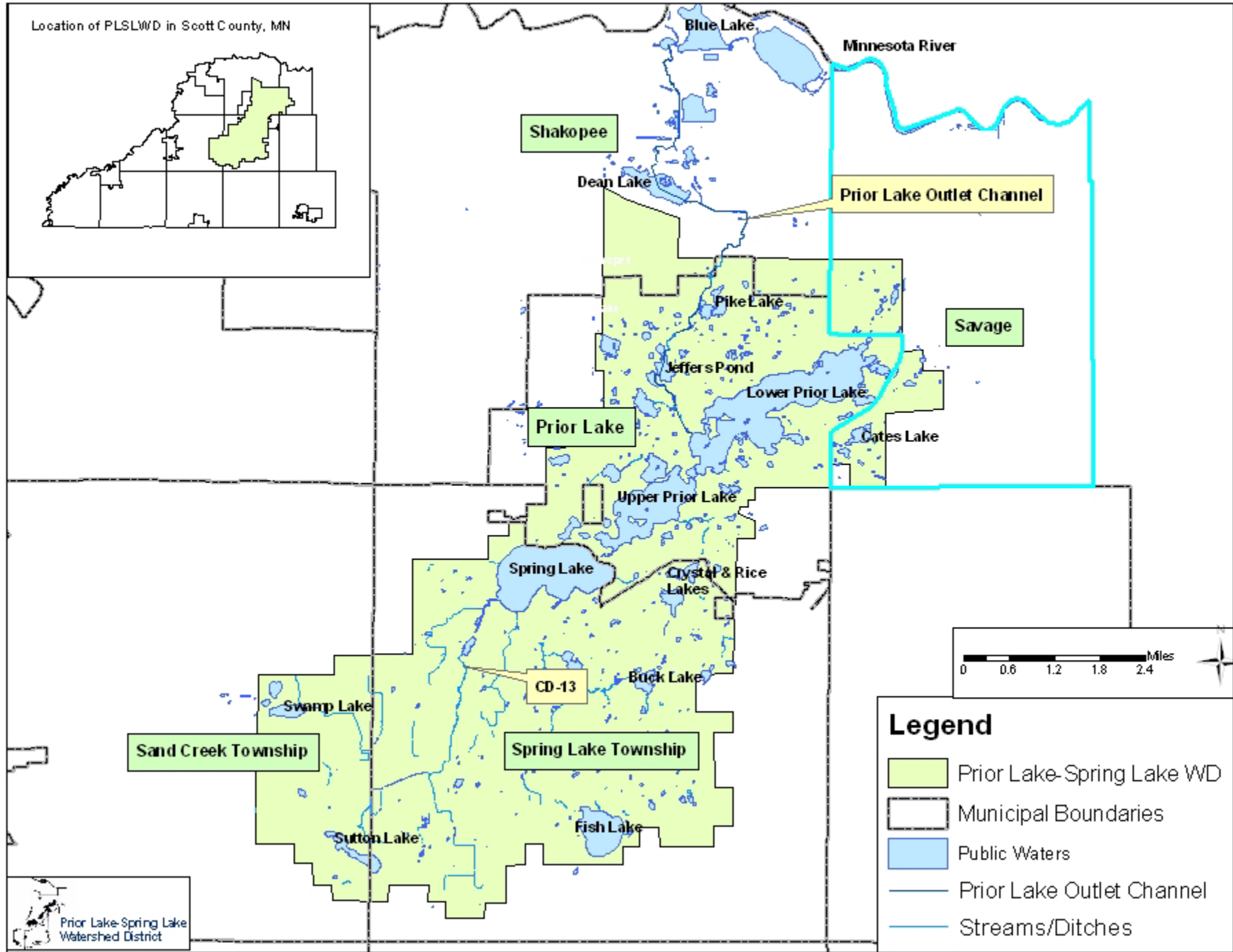
So What's a Watershed, Anyway?

- A watershed is all the land area that drains to a specific water resource, such as a lake or stream.
 - Watershed Districts are special purpose local units of government, with taxing and (limited) regulatory authority.
 - Why WDs? Water is a very important resource, but it tends not to follow political boundaries so it can be difficult to protect and manage.
-

About the PLSLWD

- Formed on March 4, 1970, via local petition
- Governed by five-person Board of Managers
 - Appointed by County Commissioners
- 42 square miles in:
 - Cities: Prior Lake, Savage, Shakopee
 - Townships: Spring Lake, Sand Creek
- 14 lakes, 7 miles of outlet channel





Mission

- To manage & preserve the water resources of the Prior Lake-Spring Lake Watershed District to the best of our ability using input from our communities, sound engineering practices, and our ability to efficiently fund beneficial projects which transcend political jurisdictions.
-

Programs and Projects

- Four main focus areas:
 - Education
 - Water Quality
 - Land Management
 - Outlet System Management
 - Implementation tools:
 - Technical assistance
 - Financial assistance/incentives
 - Regulations (permitting program)
-

Education

- Provide information about water quality, watershed functions
- Help watershed residents understand connections to our local water resources
- Provide technical assistance for new and re-development



Water Quality Improvement



- Monitor water resources
 - Develop lake management plans
 - Manage storm water runoff
 - Encourage BMPs
 - Work with partners to retrofit untreated areas
 - Implement improvement projects
-

Land Management

- Manage watershed to improve WQ and storage
- Restore drained wetlands
- Partner to install filter strips
- Encourage agricultural BMPs
- Protect waterways and storage through conservation easements



Outlet System Management



- Plan for future development
- Reduce upstream runoff
- Encourage BMPs
- Develop and implement Prior Lake outlet strategy
- Maintain and enhance Prior Lake Outlet & Channel

Tools

- Technical Assistance
 - Financial Assistance
 - Permitting Program
 - New or re-development
 - 10,000 square feet or 1 acre
 - Water quality, rate control, volume control
 - Wetland buffers
 - Working on equivalency with cities
-

Partnerships

- State; Local; Private
 - Example: Cates Lake Outlet
 - Citizen petition for a project
 - Investigated options with interested parties (state and local)
 - City is implementing solution with cooperation from PLSLWD
 - Critical to success!
-

Questions?

Contact Info.

Shannon Lotthammer

District Administrator

Prior Lake-Spring Lake Watershed District

15815 Franklin Trail SE, Suite 100

Prior lake, MN 55372

952-447-4166; slotthammer@plslwd.org

www.plslwd.org

THANK YOU!
